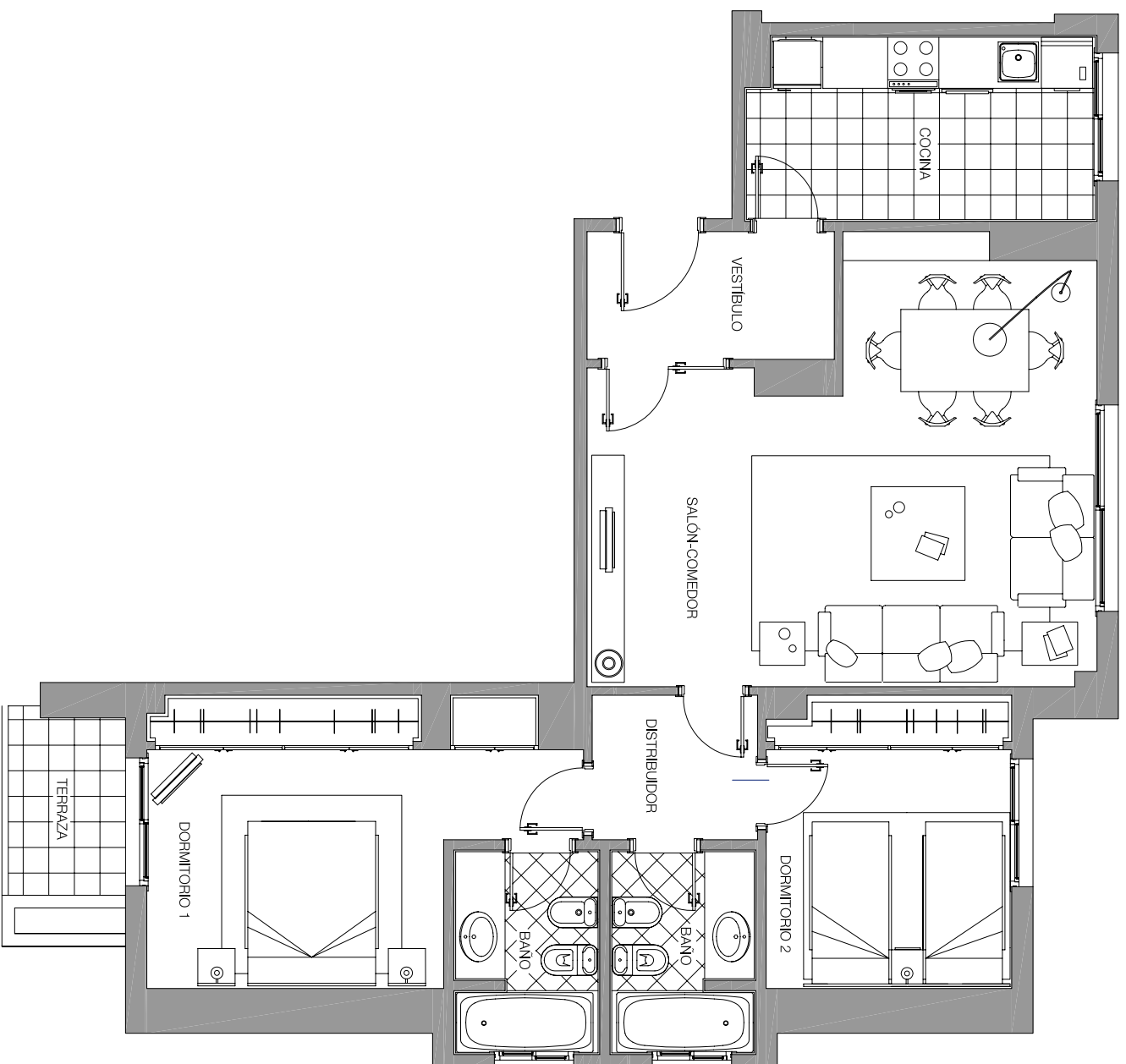


SEÑORIO DE TORREQUEBRADA



PLANTA SEGUNDA

VIVIENDA Nº 424

| | | |
|---------------|-------|----------------|
| VESTIBULO | 4.35 | m ² |
| COCINA | 8.82 | m ² |
| SALON-COMEDOR | 26.36 | m ² |
| DISTRIBUIDOR | 3.28 | m ² |
| DORMITORIO 1 | 14.19 | m ² |
| BAÑO 1 | 4.10 | m ² |
| DORMITORIO 2 | 9.77 | m ² |
| BAÑO 2 | 4.10 | m ² |
| TERRAZA | 2.92 | m ² |

SUP. UTIL TOTAL 79.07 m²

SUP. CONSTRUIDA TOTAL 105.69 m²

SUPERFICIES SEGUN REAL DECRETO 218/2005

| | | |
|-----------------|--------|----------------|
| SUP. CONSTRUIDA | 105.69 | m ² |
| SUP. UTIL | 76.43 | m ² |

